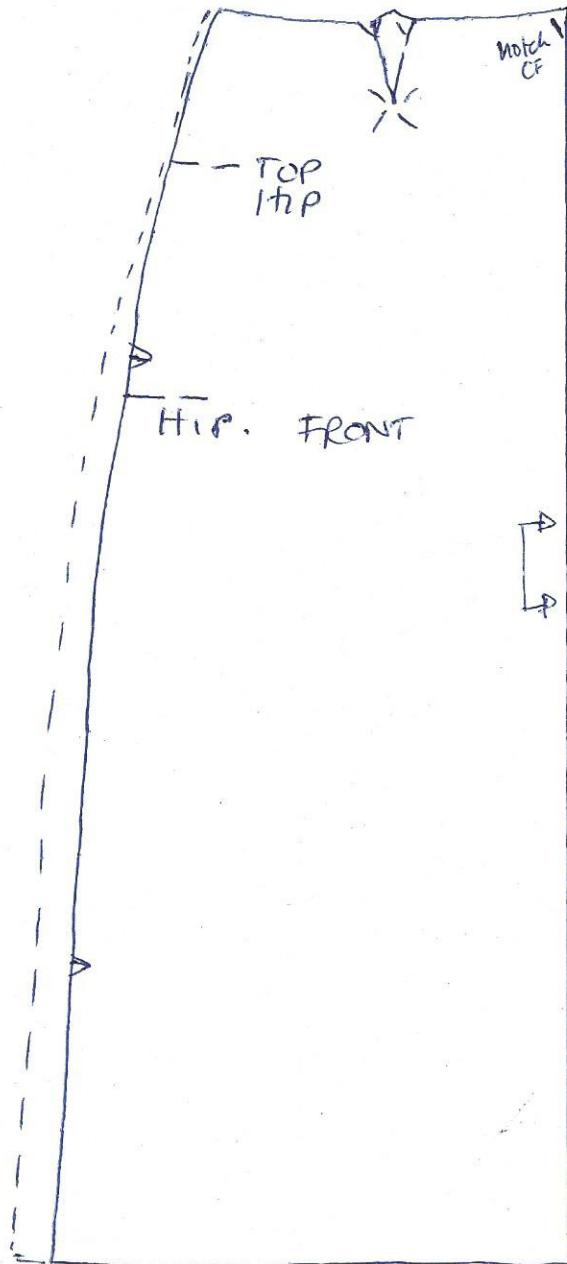
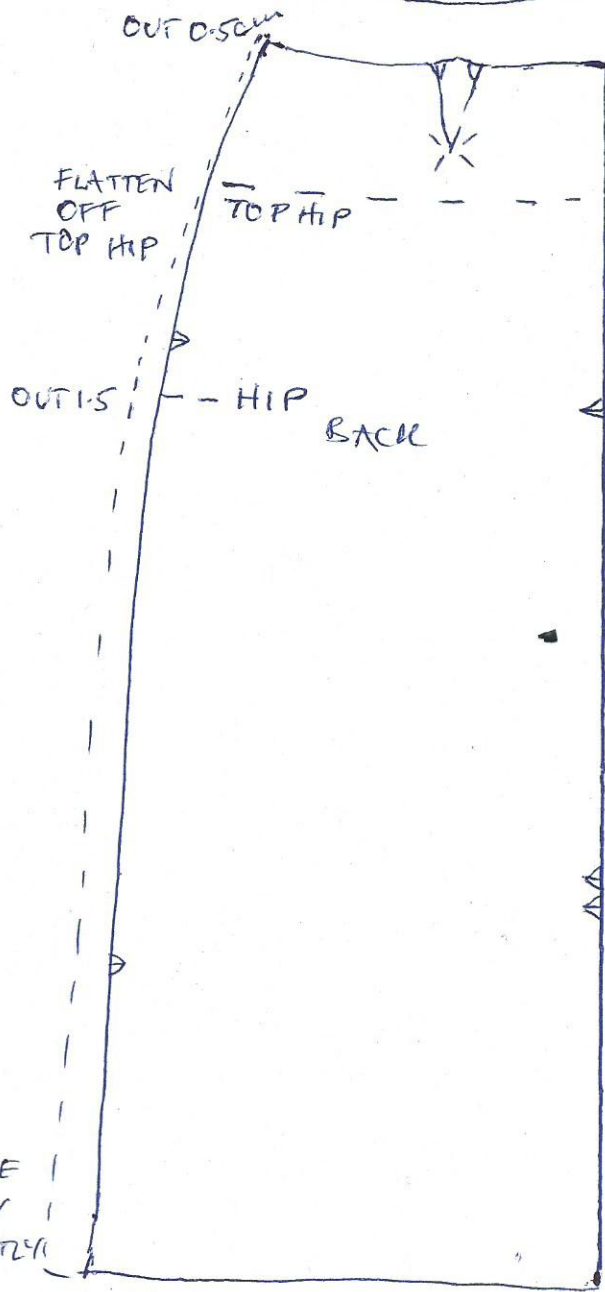


Make A Skirt in a Day.

HOW TO ADJUST YOUR PATTERN.

BACK FACING

F. FACING



IF THE FINAL BOX SAYS FOR EXAMPLE

- (+) 0.5 WAIST
- (-) 1cm HIP.
- (+) 1.5 HIP.



DO THIS ON
SIDE SEAM
OF FRONT

+ BACK PATTERNS
AS SHOWN ABOVE